



26 Maple Crescent Blayney NSW

4 2 2

Set on a generous 1,162m² block in a peaceful Blayney location, 26 Maple Crescent presents a spacious and well designed family home with plenty of room to live, relax, and entertain. Offering a practical layout and light filled interiors, this property combines comfort with functionality, making it an excellent choice for growing families or savvy buyers seeking space both inside and out.

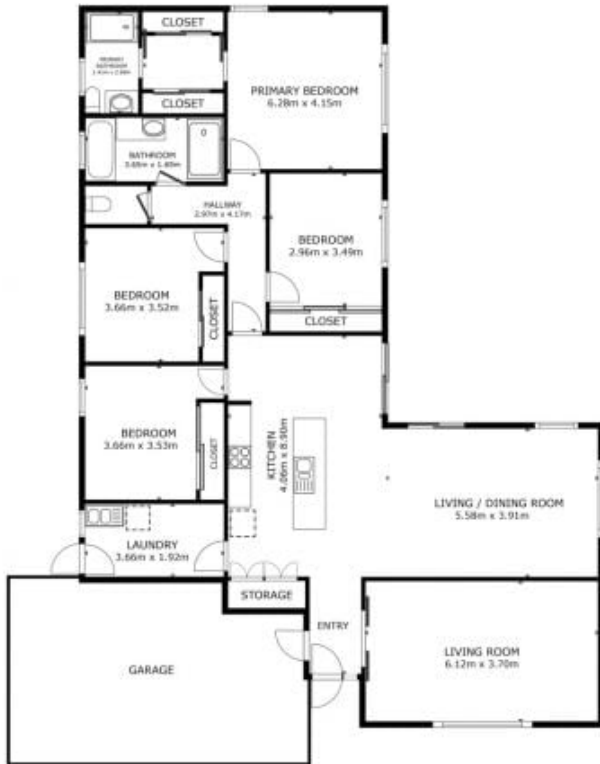
The home features four well-proportioned bedrooms, including a private main suite complete with its own ensuite, while multiple living areas provide flexibility for modern lifestyles. The heart of the home is the sun soaked kitchen, living, and dining area, where natural light floods the space while also capturing the pleasant outlook over Blayney ideal for both everyday living and entertaining.

[For full version visit the website](#)

Type : House
Price : Contact agent
Land Size : 1162 sqm
View : <https://www.ourcityrealestate.com.au/sale/nsw/central-west/blayney/residential/house/8690643>



Lucy Nell
02 5326 5700



This plan is for layout guidance only. Not drawn to scale unless stated. Windows and door openings are approximate. Whilst every care is taken in the preparation of this plan, please check all dimensions, shapes and compass bearings before making any decisions reliant upon them.